

# ACOUSTIC SLIDING WALLS



SILENTEC

2018



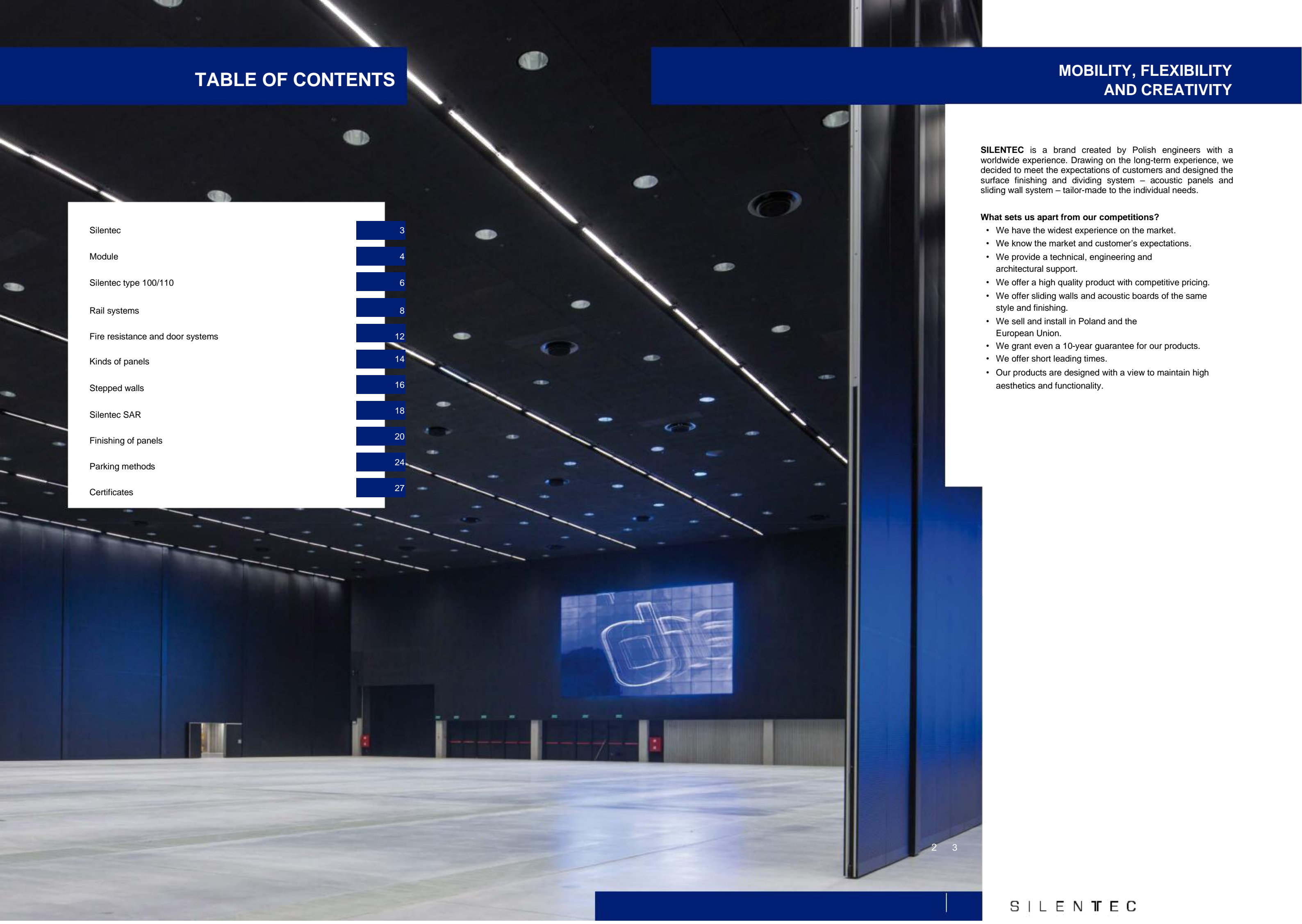


TABLE OF CONTENTS

MOBILITY, FLEXIBILITY  
AND CREATIVITY

Silentec	3
Module	4
Silentec type 100/110	6
Rail systems	8
Fire resistance and door systems	12
Kinds of panels	14
Stepped walls	16
Silentec SAR	18
Finishing of panels	20
Parking methods	24
Certificates	27

**SILENTEC** is a brand created by Polish engineers with a worldwide experience. Drawing on the long-term experience, we decided to meet the expectations of customers and designed the surface finishing and dividing system – acoustic panels and sliding wall system – tailor-made to the individual needs.

**What sets us apart from our competitions?**

- We have the widest experience on the market.
- We know the market and customer's expectations.
- We provide a technical, engineering and architectural support.
- We offer a high quality product with competitive pricing.
- We offer sliding walls and acoustic boards of the same style and finishing.
- We sell and install in Poland and the European Union.
- We grant even a 10-year guarantee for our products.
- We offer short leading times.
- Our products are designed with a view to maintain high aesthetics and functionality.



## SYSTEM FIXED AND SLIDING, GLASS AND ACOUSTIC WALLS

Since 1995 we have dealt with a various systems of surface development. We produce and install - to the individual customer's order - the system walls based on aluminium, steel and glass structures. The long experience and quality of our products and services allowed us to build the position and reputation of our company as well as the list of a few thousand of customers, including both Poland-wide construction companies, international corporations, national and foreign entrepreneurs as well as individual recipients.

The defining characteristic of our products is the variety and versatility of their application therefore they meet the expectations of our customers in business, exclusive, functional, economic, architectural and arrangement terms.

We specialise in the products that can be used in:

- modern office buildings,
- shopping and service as well as fair and exhibition centres,
- hotels, conference and congress centres, concert halls and theatres,
- touristic and recreation facilities, sports halls and stadiums,
- universities at every level, scientific institutions and monumental buildings.

We work on the systems and product of the most renowned word companies. Our products ensure the highest quality and meet all the standards what is confirmed by the received Polish and European approvals and certificates. We provide our customers with a technical, design, training and service support. We implement orders across Poland and grant up to a 10-year guarantee for our products.

Hotel Double Tree by Hilton, Łódź

### Sliding walls

Length: from 6 to 12 m

Height: from 3,5 to 4,8 m

Acoustics: 57 dB



**SILENTEC TYPE 100** acoustic wall panels with a thickness of 100 mm. The edges of the panel surface finishing boards are protected by the aluminium profile anodised or powder coated in any RAL colour.

**SILENTEC TYPE 110** wall panels with a thickness of 112 mm are the walls with a hidden profile. The wall finishing boards are installed outside the panels. The edges of the boards - depending on the version - are finished with ABS or wood. The wall, after unfolding, forms a single plane without clearly accented connections of panels. The joints are visible as gentle 3 mm joints.

Both division methods are available in the manual version and in the version of the automatic SAR panel locking system.

The one- or two-wing door may be built in the walls of type 100/110. This product is provided with system solutions for connecting panels at any angle, creating T, L and X type connections, running walls over a curve and forming wall crossings. We can produce the walls with a height of up to 16 m.

Product features:

- Acoustic resistance  $R_w$  44 dB, 49 dB, 52 dB, 54 dB.
- Building Research Institute (ITB) certificate.
- Building Research Institute (ITB) test of reaction to fire performance for complete panels (including seals). Walls in class Bs2d0.



Lower sealing telescope



Vertical "tongue" profile

Concert Hall, Kalisz

**Sliding walls**

Length: 17 m

Height: 7 m

Acoustics: 48 dB

SILENTEC



## SILENTEC 100/110 RAIL SYSTEM

### Reliable suspension systems:



#### 2-point rail - type 36

The aluminium carrying rail for two-point suspension. The carriage with a vertical axis of rotation. The rail has two separate tracts on which the carriage moves silently. The wheels of the carriages rotate against the direction of travel. The rail is equipped with catches to connect the additional profiles used to execute the acoustic development between the rail and the ceiling or/and to support the suspended ceiling. The system of special connectors allows connecting rails at any angles, executing L, T and X type connections and curve connection, crossings as well as curve interpolation. The standard rail colour is RAL 9003 (white) or anode E6/EV1. The rail can be painted in any RAL colour.



#### 1-point rail - type 40

The aluminium carrying rail for one-point suspension of very heavy elements. The carriage with a horizontal axis of rotation. The rail has two separate tracts on which the carriage moves smoothly and silently. The shape of the rail allows executing the acoustic development between the rail and the ceiling or/and to support the suspended ceiling. The standard rail colour is RAL 9003 (white) or anode E6/EV1. The rail can be painted in any RAL colour. The system allows parking elements in the axis of the rail rotated by 90 degree. It is also possible to park on both ends of the rail.



#### Steel rail for heavy loads

The steel rail for two-point suspension for the panels with a large weight and height exceeding 5 metres. The carriages with steel wheels and horizontal axes of rotation are equipped with control elements directing the panel on the proper rails. The rail masking elements are made of aluminium anodised or powder coated in any RAL colour.

Kielce Trade Fairs

### Sliding walls

Length: from 4 to 17 m

Height: from 2 to 10 m

Acoustics: 39 and 46 dB



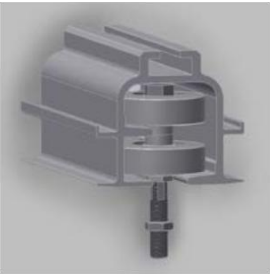


# RAIL SYSTEMS

We use various kinds of rails depending on the design needs and parking method. The rails are made of high quality anodised aluminium. The standard rail colour is RAL 9003 (white) or anode E6/EV1. The rail can be painted in any RAL colour.



Steel rail



Two-point rail



One-point rail







## FIRE RESISTANCE - DOOR SYSTEMS

The door systems for our walls are presented on page 15:  
**KINDS OF PANELS.**

The door is equipped with hinges of increased carrying capacity. The standard door is provided with a lock and handle flushed with the door panel plane. On request we equip the doors with locks, handles or anti-panic push bars.

The Silentec acoustic sliding walls may be produced as fire-resistant ones in the class Bs2d0. In such a case, you receive a certificate confirming the fire resistance of the entire product.



Hinges



Handles



Anti-panic push bar



Panel sliding holder

Opole Trade Fairs

### Sliding walls

Length: 100 m

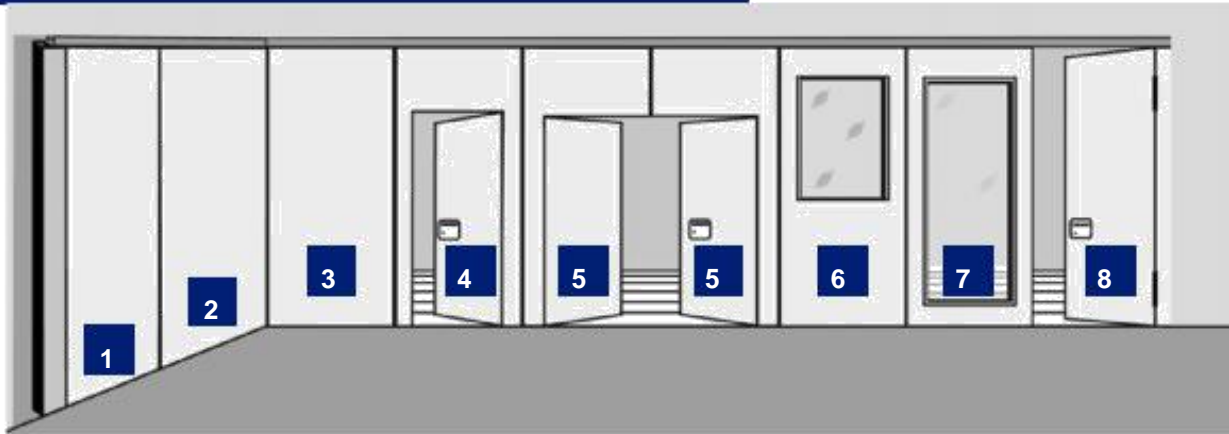
Height: from 4,5 to 11 m

Acoustics: 48 dB





## KINDS OF PANELS SILENTEC -TYPE 100/110



- |                           |                        |                          |
|---------------------------|------------------------|--------------------------|
| <b>1</b> Telescopic panel | <b>4</b> One-wing door | <b>7</b> Glazed panel    |
| <b>2</b> Corner panel     | <b>5</b> Two-wing door | <b>8</b> Pivot-type door |
| <b>3</b> Standard panel   | <b>6</b> Glazed panel  |                          |

## TECHNICAL DATA

	Type 110	Type 100
Panel thickness (mm)	112	100
Maximum element height (mm)	16 000	13 000
Recommended maximum element width (mm)	1 320	1 320
Recommended minimum element width (mm)	650	650
<b>Design</b>		
Maximum weight / element	1-point - 400 kg 2-point - 680 kg	1-point - 400 kg 2-point - 680 kg
Frames	aluminium / steel	aluminium / steel
Board	16 / 19 mm	16 / 19 mm
<b>Aluminium profiles</b>		
Vertical and horizontal profiles	E6 / EV1   anodic Aluminium profiles	E6 / EV1   anodic Aluminium profiles
Sealing elements	Anodised in black	Anodised in black
Model	Profile edges hidden/invisible	Profile edges visible (board edge cover)
Locking	manual / semiautomatic	manual / semiautomatic
Door	one- or two-wing	one- or two-wing
Acoustic resistance	44 dB, 49 dB, 52 dB, 54 dB	44 dB, 49 dB, 52 dB, 54 dB

**KCK, Kraków**

**Sliding walls**  
Length: 250 m  
Height: from 2 to 6 m  
Acoustics: from 39 to 54 dB



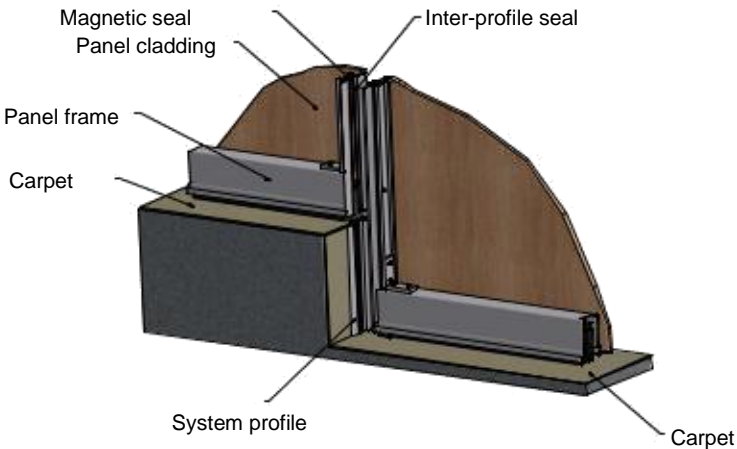


## STEPPED WALLS

The **stepped wall system** was designed in particular for lecture halls, concert hall and all rooms with the variable slope of the floor. This solution allows these rooms to divide acoustically in any way while keeping full acoustics up to Rw54dB. The height of the individual panels is adjusted to individually to the height of the particular steps of the room.



Door jamb



LCP - panel closing wall horizontally

**Sliding walls**  
Length: 15 m  
Height: 7 m  
Acoustics: 42 dB

Biocentre at University of Life Sciences, Poznań



## SILENTEC SAR — AUTOMATIC LOCKING

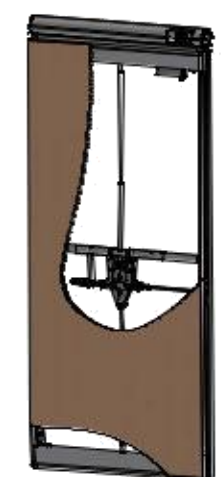
The innovative SAR system is an alternative solution for the do manual wall locking system. The task of a person who unfolds or folds the wall is only to move manually the panels. The panels are locked or unlocked automatically without the operator. Each panel is equipped with a NHK-m system allowing the panels to unlock, e.g. in the event of a power failure. This is standard equipment of our product.

### Product features:

- Automatic locking and unlocking of panels.
- Possibility to limit access of unauthorised persons to operate the wall (key-operated station).
- CE mark for used mechanisms.



**Manual locking system - 3S** - locking of panels by one rotation of crank by 180°



**Electric locking system - SAR**

### Sliding wall

Length: 200 m  
Height: from 2 to 6 m  
Acoustics: 53 dB

Hotel Narvil, Serock

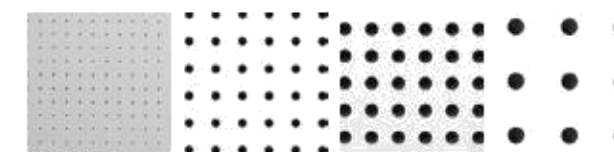


## WALL SURFACE FINISHING

The external surface of panels may be performed with different finishing depending on design and arrangement requirements.

Wood veneers, melamine boards, HPL laminates, acoustic panels, laminates with digital overprint, mirrors, glass, magnetic tables, floor carpets, wallpapers etc. may be used as finishing of panels.

We cooperate with leading producers of melamine boards laminated chipboards. Our basic collection is the fastest available and cheapest wall finishing. This collection includes 8 decorations of melamine boards and 2 HPL colours.



Types of perforations



Perforations

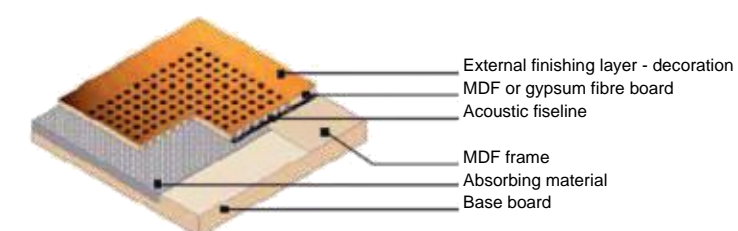


Diagram of perforated board

State Folk Group of Song and Dance “Mazowsze”, Karolin

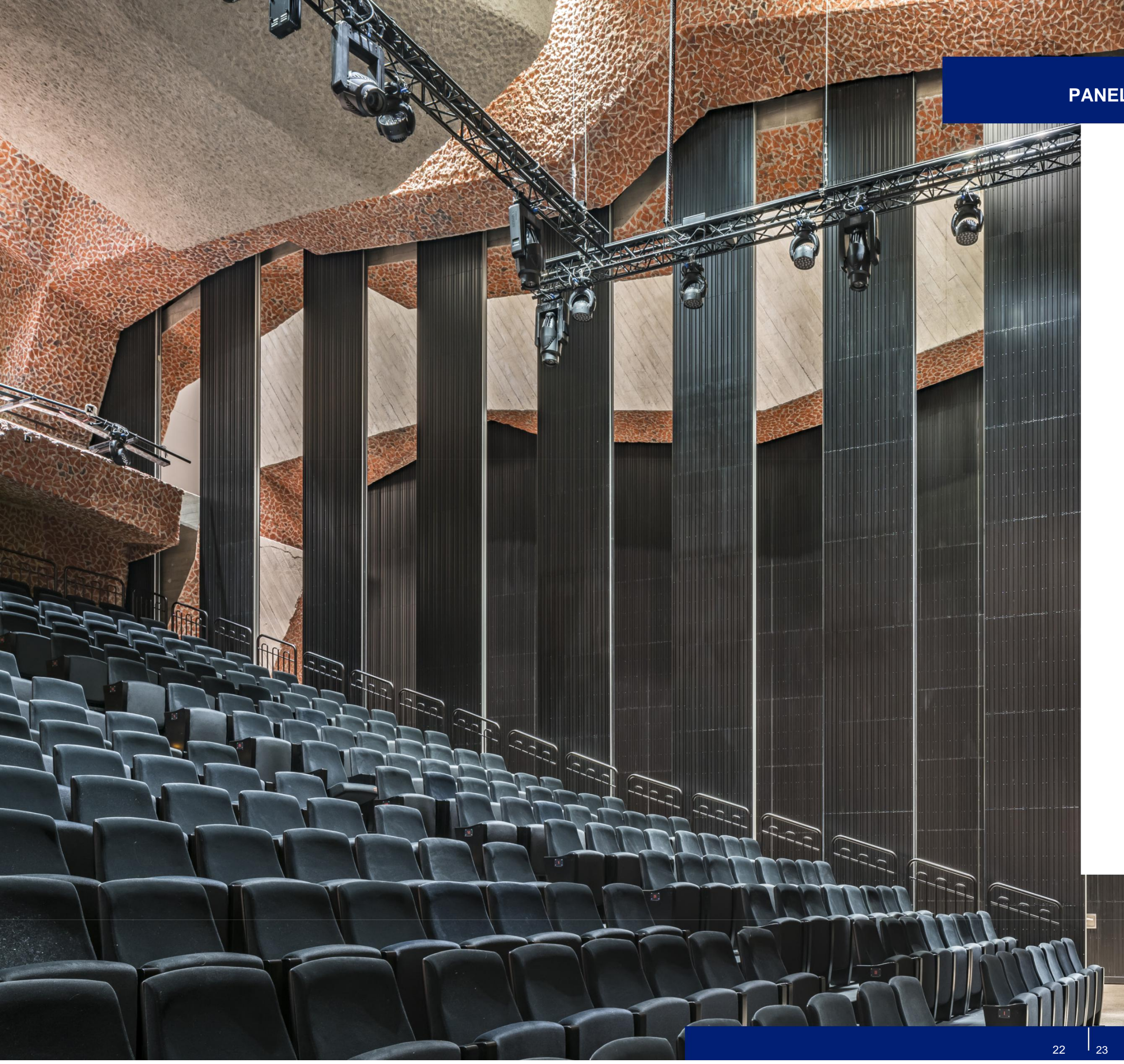
### Sliding walls

Length: 21 m

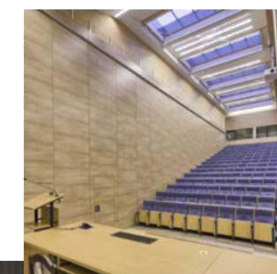
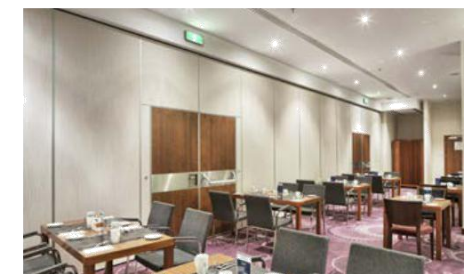
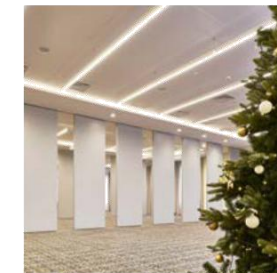
Height: 10 m

Acoustics: 54 dB



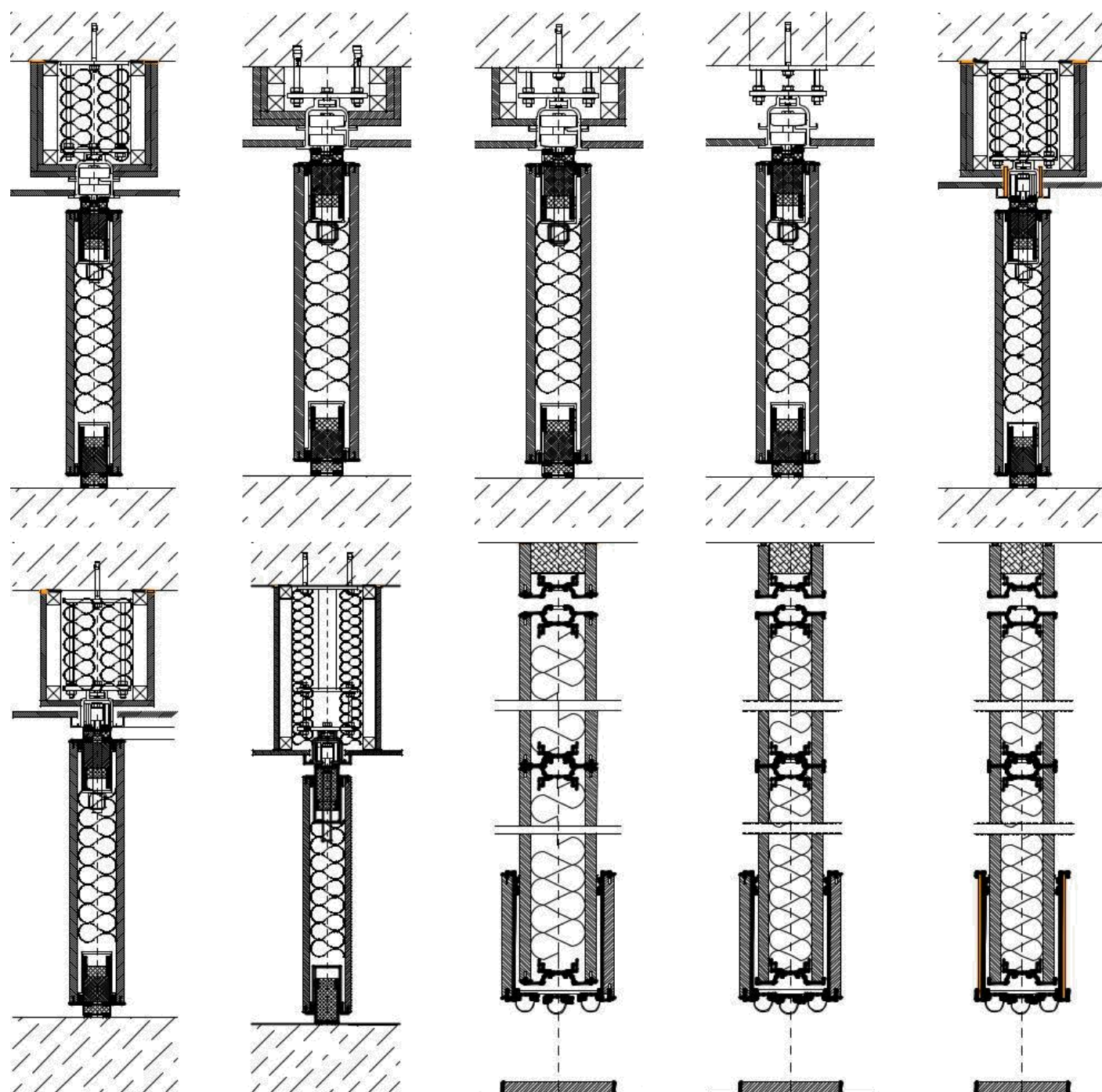
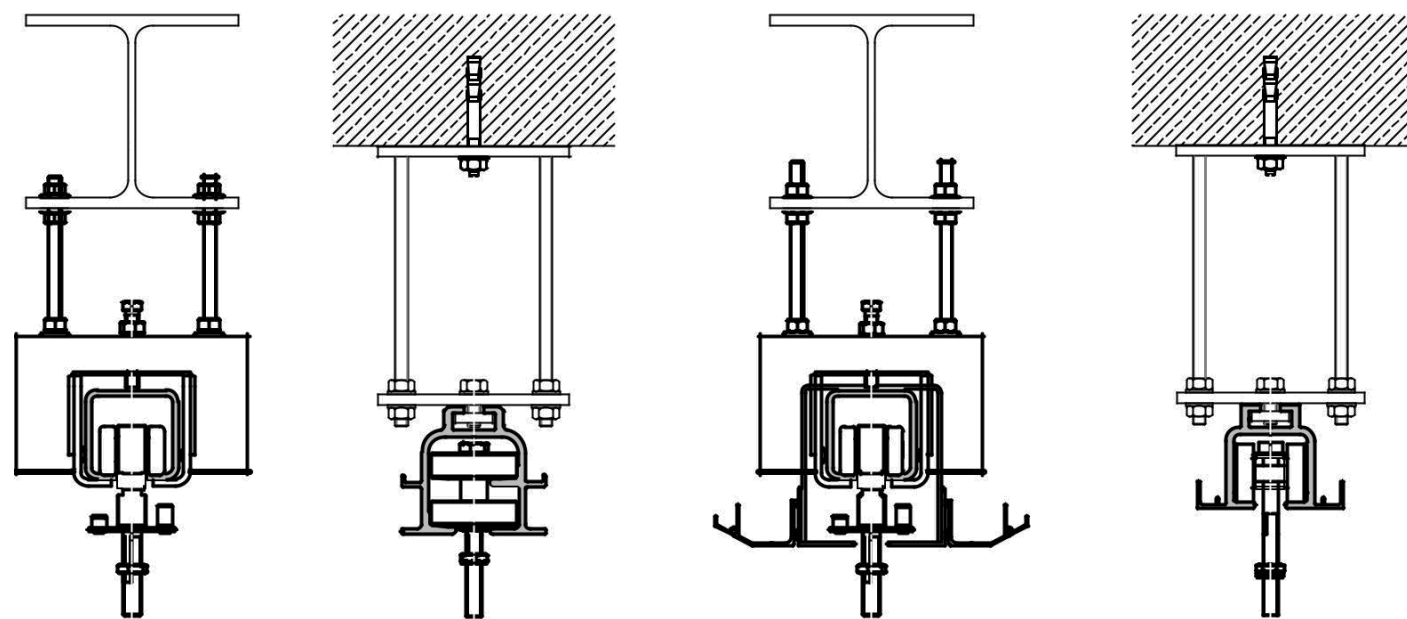


## PANEL SURFACE FINISHING

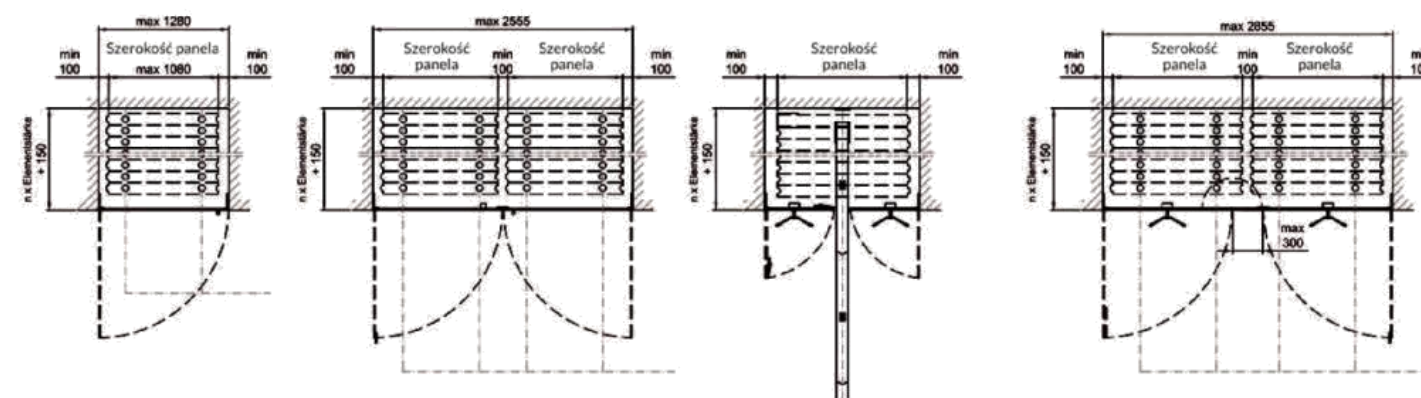
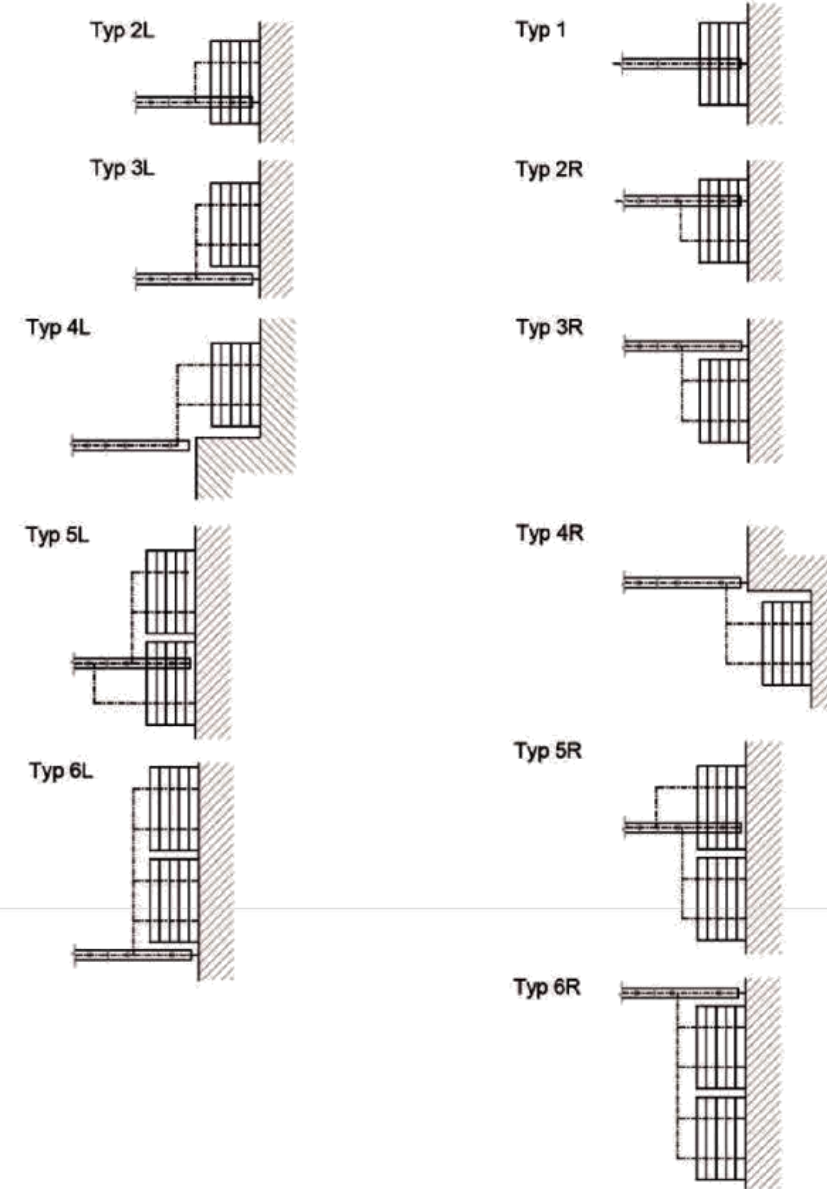


**Sliding walls**  
Length: 21 m  
Height: 10 m  
Acoustics: 54 dB





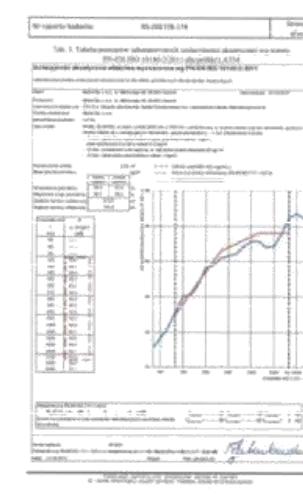
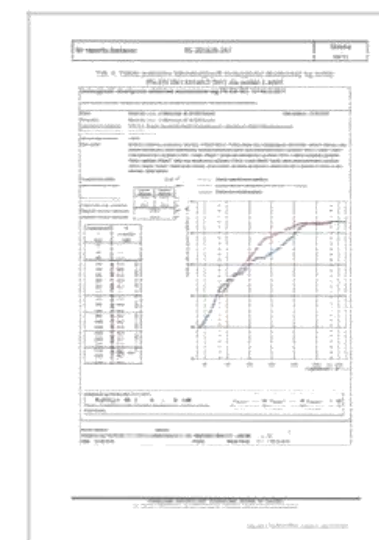
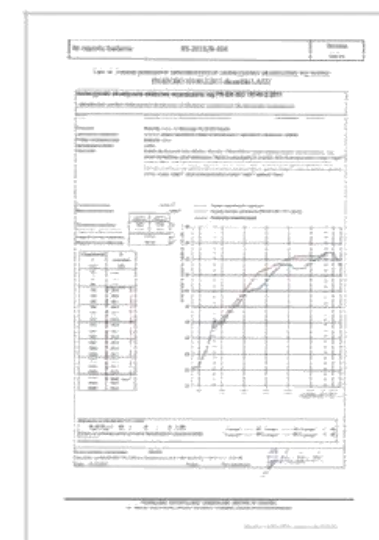
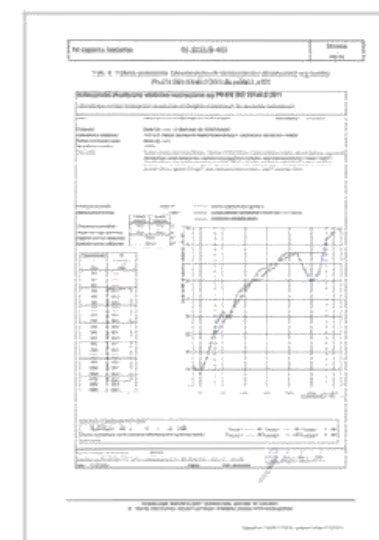
## PARKING METHODS



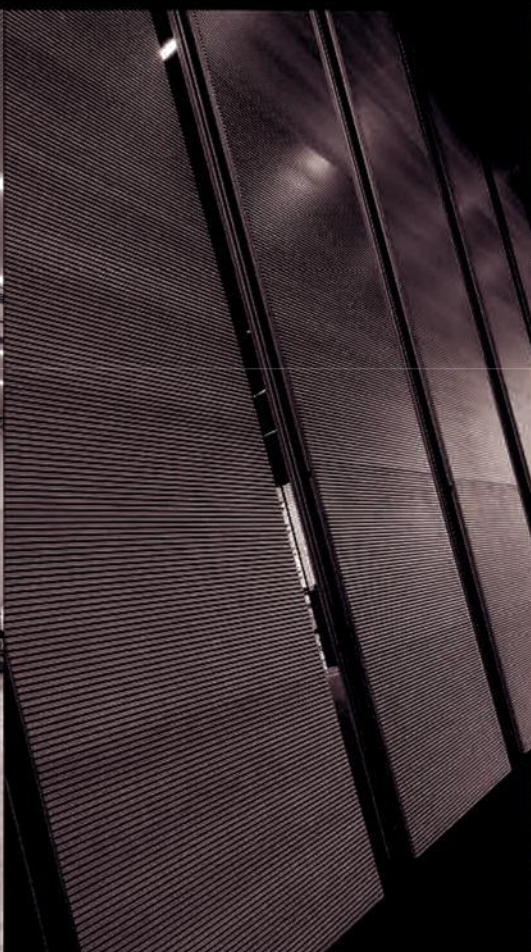




## CERTIFICATES







Moduł Sp. z o.o.  
ul. Merkurego 48,  
05-825 Kozierki

tel.: 48 22 843 05 06  
tel.: 48 22 843 12 12

e-mail: [modul@modul.waw.pl](mailto:modul@modul.waw.pl)  
[www.modul.waw.pl](http://www.modul.waw.pl)